

# TRUST



Working as a team internally and externally we rely on each other and our counterparts, acknowledging everyone's strengths and weaknesses with integrity.



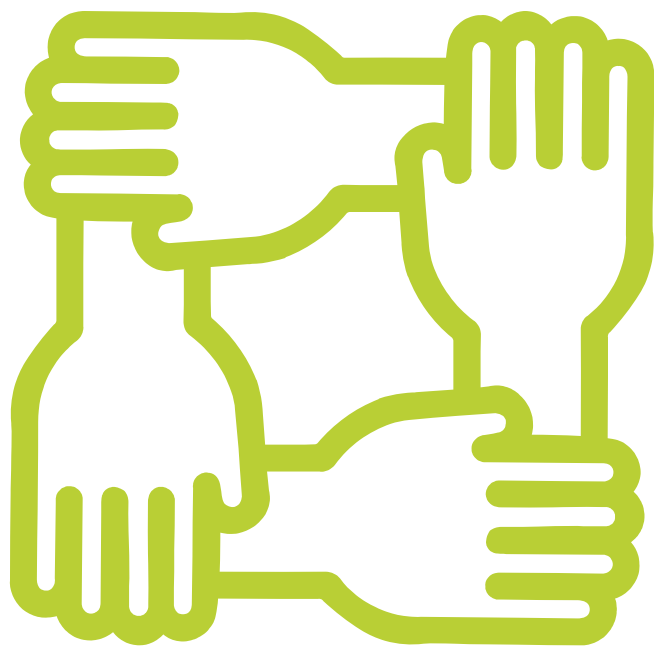
# AGILITY



In complex environments and challenging circumstances, we manage focusing on pragmatic solutions with balanced attention to schedule, risk and cost.



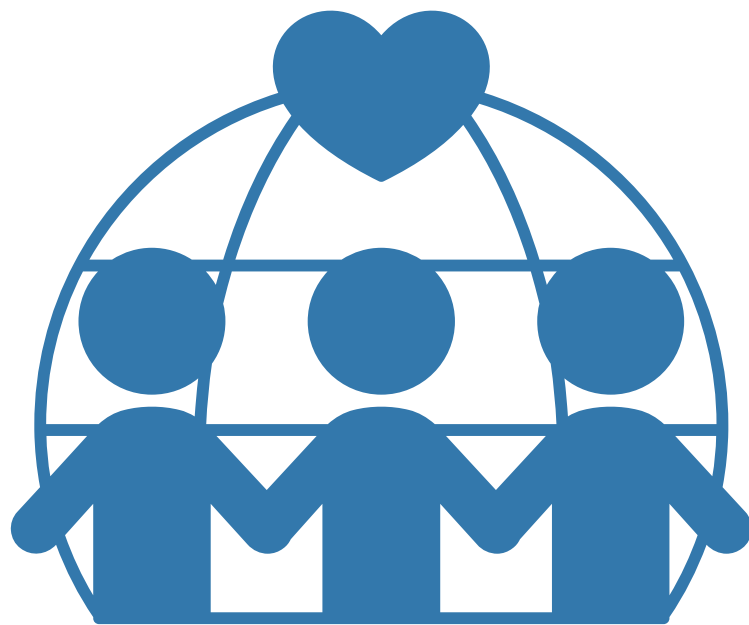
# RELIABILITY



Acting ethically and responsibly, we stand by our word to commit to accountability as individuals as much as our team and company.



# OPENNESS & RESPECT



We maintain an open mind by listening and being attentive while we respectfully respond; honest, upfront, and direct.